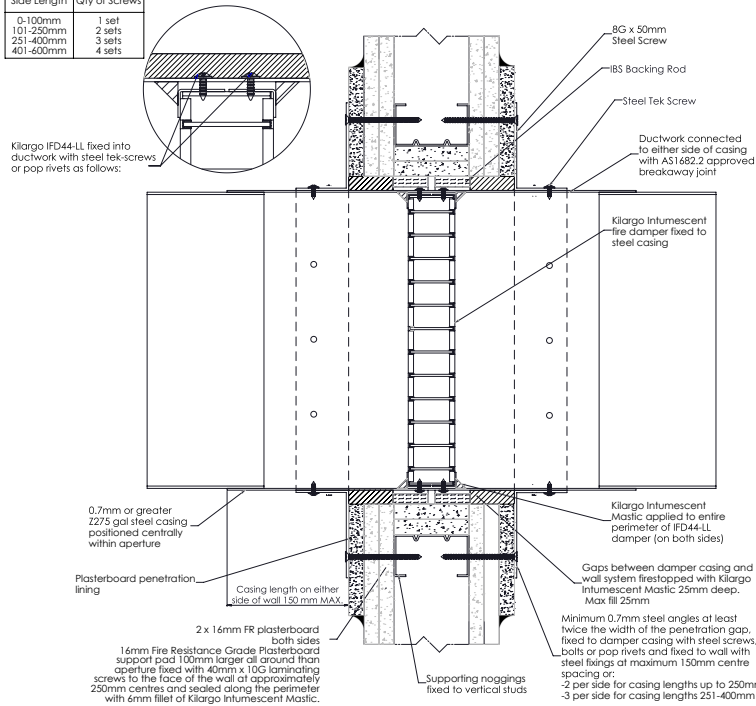


Installation Instructions: Ducted

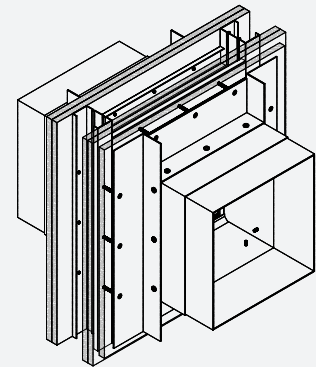
Side Length	Qty of Screws
0-100mm	1 set
101-250mm	2 sets
251-400mm	3 sets
401-600mm	4 sets



- Step 1** Install additional 100mm wide plasterboard pad around aperture as per system drawing.
- Step 2** Position damper centrally in penetration aperture as per system drawing with IBS Backing Rod and temporary supports or packers.
- Step 3** Apply Kilargo Intumescent Mastic (supplied separately) to the gaps between the damper & building element & to perimeter of additional plasterboard pad. Ensure fill depth corresponds with those detailed in the system drawing.
- Step 4** Fasten mounting angles to damper with steel self-drilling screws or steel pop rivets and, if detailed, to the building element with appropriate mechanical fixings as per system drawing.
- Step 5** Ensure product and certification labels are in a prominent position for easy identification during subsequent maintenance inspections.
- Step 6** Connect ductwork to the damper casing with AS 1682.2 compliant breakaway joint.

System Notes

- IBS backing rod & fixings are to be supplied by others.
- Kilargo Intumescent Fire Dampers shall be installed in accordance with this detail, including the use of Kilargo Intumescent Mastic and in accordance with the requirements of AS1682.2
- Ensure convenient access is provided for visual inspection and cleaning as necessary
- 2mm Minimum gap allowable between damper and aperture. For gaps between 2-5mm, a fillet of Kilargo Intumescent Mastic shall be applied



Building element:	FR Plasterboard 2 x 16 + 1
Application:	Mounted in casing DD with insulation rating
Maximum size:	250 x 250 or 0.0625m ²
FRL	-/120/120
Test reference No.	FC0 3449

System No. WP16i