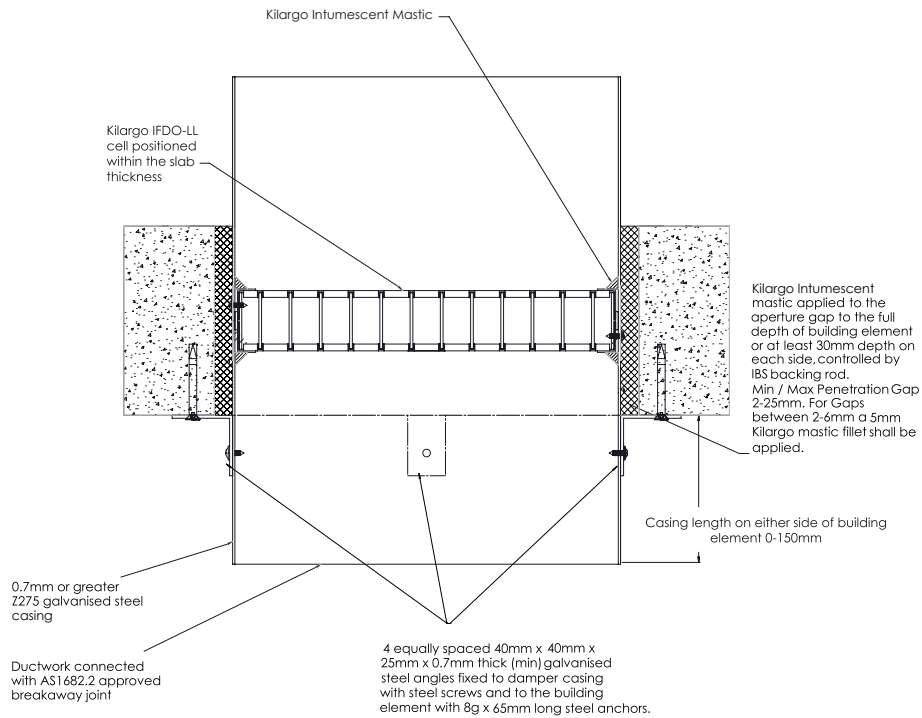


## Installation Instructions:

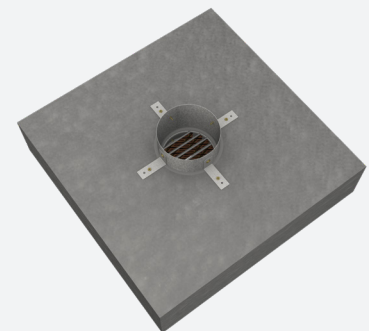
### Ducted



- |               |  |
|---------------|--|
| <b>Step 1</b> | Position damper centrally in penetration aperture as per system drawing with IBS Backing Rod and packers.  |
| <b>Step 2</b> | Fasten mounting brackets to damper with steel self-drilling screws or steel pop rivets and to the building element with appropriate mechanical fixings as per system drawing.      |
| <b>Step 3</b> | Apply Kilargo Intumescent Mastic (supplied separately) to the gaps between the damper & building element. Ensure fill depth corresponds with those detailed in the system drawing. |
| <b>Step 4</b> | Ensure product and certification labels are in a prominent position for easy identification during subsequent maintenance inspections.   |
| <b>Step 5</b> | Connect ductwork to the damper casing with AS 1682.2 compliant breakaway joint.  |

### System Notes

- Grilles, louvres, IBS backing rod & fixings are to be supplied by others.
- Kilargo Intumescent Fire Dampers shall be installed in accordance with this detail, including the use of Kilargo Intumescent Mastic and in accordance with the requirements of AS1682.2
- Ensure convenient access is provided for visual inspection and cleaning as necessary
- 2mm Minimum gap allowable between damper and aperture. For gaps between 2-6mm, a fillet of Kilargo Intumescent Mastic shall be applied..



Building element: Concrete Slab

Application: Ducted

Maximum size: 350 DIA

FRL -/120/120

Test reference No. FCO 3344

**System No. FL4**