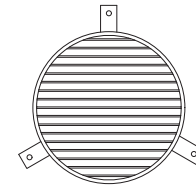
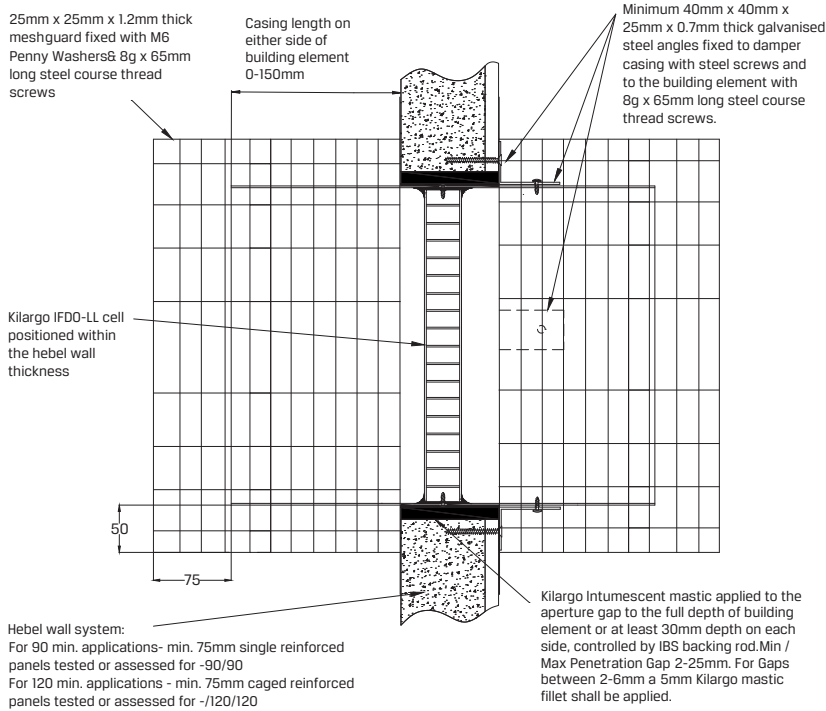
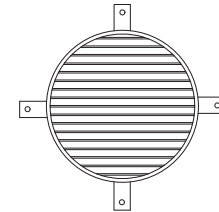


Installation Instructions: Air Transfer



3 Off Angle brackets for sizes up to 200mm dia



4 Off Angle brackets for sizes 250mm dia and over

Alternative Fixing Method

- Step 1** Position damper centrally in penetration aperture as per system drawing with IBS Backing Rod.
- Step 2** Fasten mounting brackets to damper with steel self-drilling screws or steel pop rivets and to the building element with appropriate mechanical fixings as per system drawing.
- Step 3** Apply Kilargo Intumescent Mastic (supplied separately) to the gaps between the damper & building element. Ensure fill depth corresponds with those detailed in the system drawing.
- Step 4** Ensure product and certification labels are in a prominent position for easy identification during subsequent maintenance inspections.
- Step 5** Fix 25 x 25 x 1.2mm thick mesh guards to each side of the building element with M6 penny washers & appropriate 8g x 65 fixings to suit as shown.

System Notes

- Mesh guards, IBS backing rod & fixings are to be supplied by others.
- Kilargo Intumescent Fire Dampers shall be installed in accordance with this detail, including the use of Kilargo Intumescent Mastic and in accordance with the requirements of AS1682.2
- Ensure convenient access is provided for visual inspection and cleaning as necessary
- 2mm Minimum gap allowable between damper and aperture. For gaps between 2-6mm, a fillet of Kilargo Intumescent Mastic shall be applied

Building element:	Hebel
Application:	Transfer Air with mesh guard in 75mm hebel wall with FR plasterboard liner on one side
Maximum size:	350 DIA
FRL	-/120/120
Test reference No.	FCO 3344
System No.	WH4i