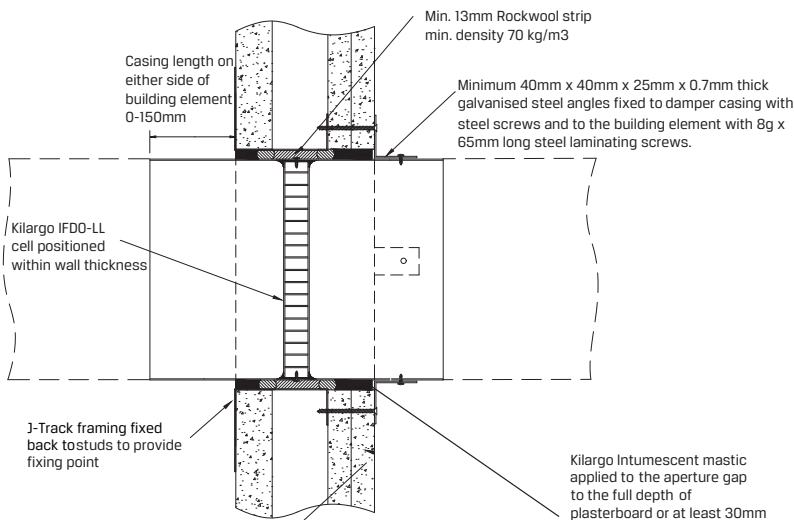


Installation Instructions:

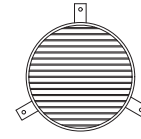
Ducted



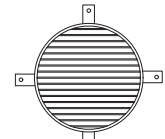
Shaftwall System:

For 120 minute applications - 25mm Shaftliner and 2 x 16mm fire resistant grade lined J track frame. The wall shall be supported by a test or assessment for the required FRL and constructed in accordance with that specification.
 For 90 minute applications - 25mm Shaftliner and 2 x 13mm fire resistant grade lined J track frame.
 The wall shall be supported by a test or assessment for the required FRL and constructed in accordance with that specification.

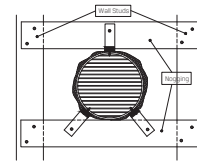
Kilargo Intumescent mastic applied to the aperture gap to the full depth of plasterboard or at least 30mm depth on each side, controlled by IBS backing rod.
 Min / Max Penetration Gap 2-25mm. For Gaps between 2-6mm a 5mm Kilargo mastic fillet shall be applied.



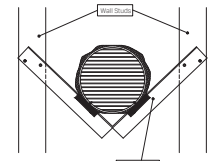
3 Off Angle brackets for sizes up to 200mm dia



4 Off Angle brackets for sizes 250mm dia and over



Guard Removed for clarity
 FACE FIXING
 Alternative fixing method Kilargo Intumescent fire damper supported by studs noggins fixed to



Guard Removed for clarity
 FACE FIXING
 Alternative fixing method Kilargo Intumescent fire damper supported by external Rondo angle built between studs

Alternative Fixing Method

- Step 1** Position damper centrally in penetration aperture as per system drawing with IBS Backing Rod and packers.
- Step 2** Fasten mounting brackets to damper with steel self-drilling screws or steel pop rivets and to the building element with appropriate mechanical fixings as per system drawing.
- Step 3** Apply Kilargo Intumescent Mastic (supplied separately) to the gaps between the damper & building element. Ensure fill depth corresponds with those detailed in the system drawing.
- Step 4** Ensure product and certification labels are in a prominent position for easy identification during subsequent maintenance inspections.
- Step 5** Connect ductwork to the damper casing with AS 1682.2 compliant breakaway joint.

System Notes

- Grilles, louvres, IBS backing rod & fixings are to be supplied by others.
- Kilargo Intumescent Fire Dampers shall be installed in accordance with this detail, including the use of Kilargo Intumescent Mastic and in accordance with the requirements of AS1682.2
- Ensure convenient access is provided for visual inspection and cleaning as necessary
- 2mm Minimum gap allowable between damper and aperture. For gaps between 2-6mm, a fillet of Kilargo Intumescent Mastic shall be applied

Building element:	FR Plasterboard 25 + 2
Application:	Ducted
Maximum size:	350 DIA
FRL	-/120/120
Test reference No.	FCO 3344
System No.	WP4