

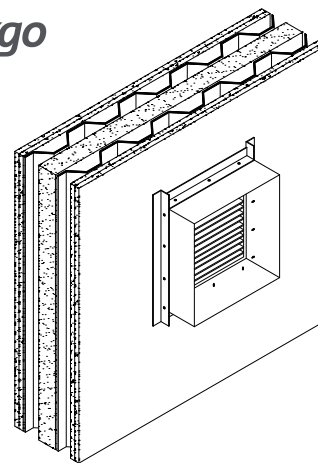
Installation Instructions

Single cell units in steel casing penetrating CSR Security wall

1. Position damper centrally in penetration aperture as detailed in the System Drawing.
2. Fire-stop any gaps between the damper & Security Wall with Kilargo Intumescent Mastic (supplied separately). Ensure fill depth corresponds with those detailed in the System Drawing.
3. Fasten mounting angles to one sides of damper casing with steel self drilling screws or steel pop rivets.
4. Fix mounting angles to Security wall using 60mm long steel self drilling screws (note fixings should engage with steel liner).
5. If connecting ductwork to the installed damper casing ensure that an appropriate AS1682.2 compliant breakaway joint method is used.
6. Ensure product and certification labels are in a prominent position for easy identification during subsequent maintenance Inspections.
7. Ensure convenient access is provided for visual inspection and cleaning as necessary.

Notes

1. Product must be fitted in accordance with this detail, including the use of Kilargo Intumescent Mastic to ensure compliance with Kilargo Fire Test Approval detailed.
2. Steel casing, angles & fixing screws are to be supplied by others.



Building Element	CSR Security wall
Application	Mounted in steel casing in penetration
Maximum Size	600mm x 600mm
FRL	-/90/- without cover grille -/90/90 with cover grille
Test Reference No.	EWFA 45955

System No. **WS1**