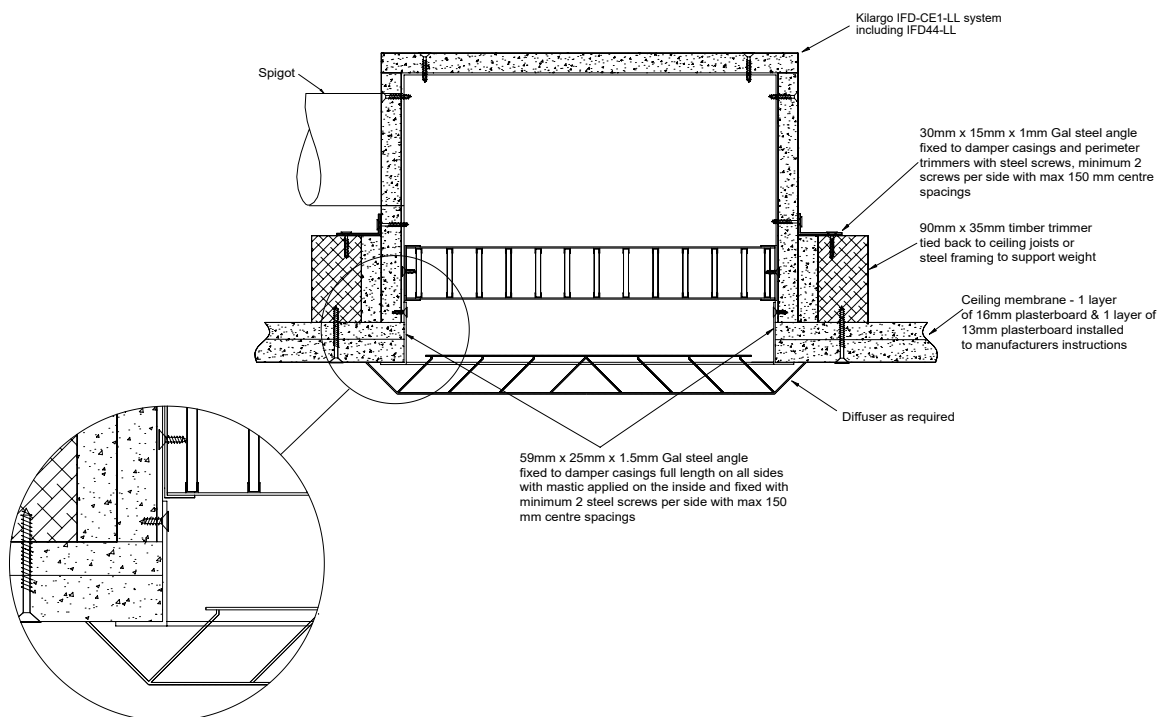
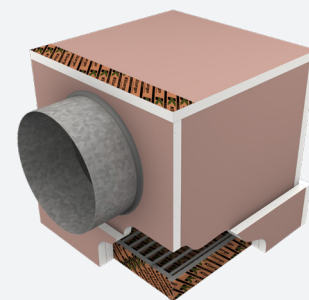


**Installation Instructions:***Ceiling Under Floor & Ceiling Under Roof Systems*

<b>Step 1</b>	If ceiling is in framing stage, start at step 2 below. For existing fire rated ceilings, mark and cut out to suit internal IFD-CE1-LL plenum dimensions.
<b>Step 2</b>	Fix timber trimmers to ceiling joists to fully support weight of system as per system drawing.
<b>Step 3</b>	Fix IFD-CE1-LL box to framing with angles as per system drawing and attach ductwork to spigot
<b>Step 4</b>	Apply mastic to the inside of angles and fix to the inside of penetration & IFD-CE1 plenum as per system drawing.
<b>Step 5</b>	Fit register / diffuser as required.
<b>Step 6</b>	Ensure convenient access is provided for visual inspection and cleaning as necessary.
<b>Step 7</b>	Ensure product and certification labels are in a prominent position for easy identification during subsequent maintenance routines.

**System Notes**

- Grilles, diffuser, trimmers, angles and fixings are to be supplied by others.
- Kilargo Intumescent Fire Dampers shall be installed in accordance with this detail, including the use of Kilargo Intumescent Mastic (supplied separately) and in accordance with the requirements of AS1682.2
- Ensure convenient access is provided for visual inspection and cleaning as necessary
- Where the RISF is different between the fire rated floor/ceiling or roof/ceiling and the Kilargo IFD-CE1-LL, the lower RISF shall apply to both.



Building element:	13 & 16mm FR Plasterboard Ceiling
Application:	Ceiling Mounted Fire Rated Plenum Box (60 min RISF Incipient rated)
Maximum size:	600 x 600
FRL	-/60/60
Test reference No.	FC16550

**System No. CE1-60**